

# REIMAGINING REDCAR and CLEVELAND

DIVERSE GEOGRAPHY  
COASTAL URBAN COUNTRYSIDE

BEAUTY

Small communities

Lack of transport = poor connectivity  
no centre

Lots of identities

Industrial past

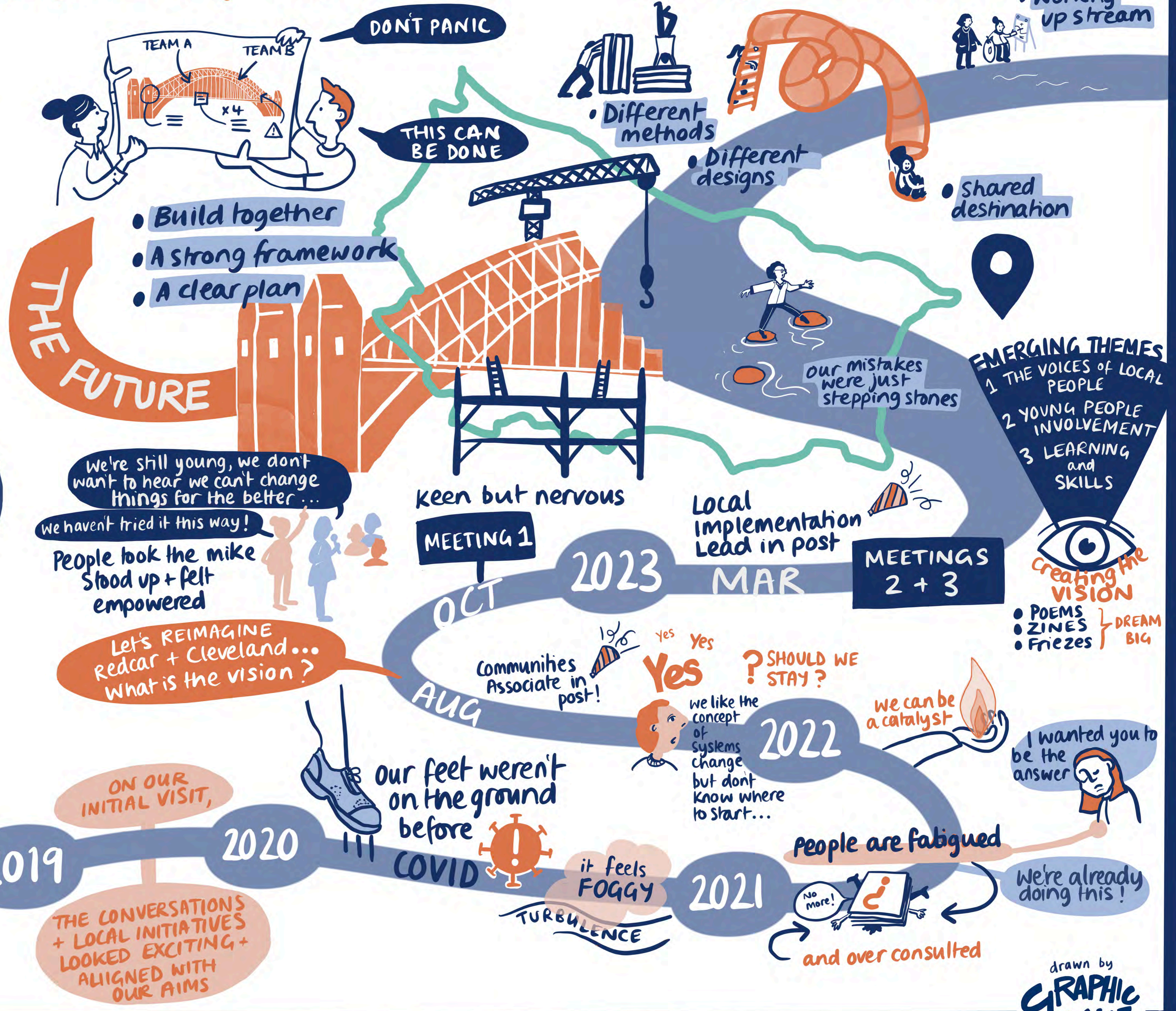
Pride

LACK OF INFRASTRUCTURE

DORMAN LONG

LLOYDS BANK FOUNDATION

England & Wales



drawn by GRAPHIC CHANGE